

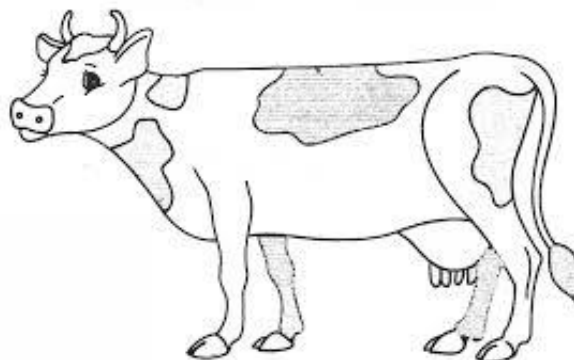
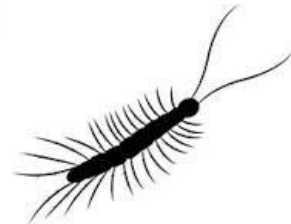
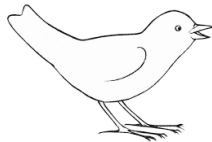
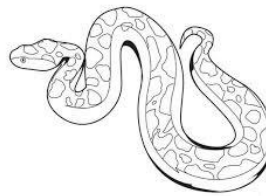
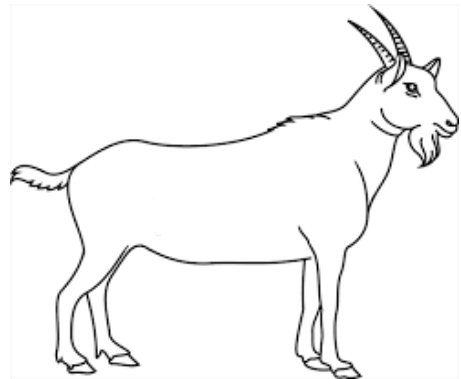
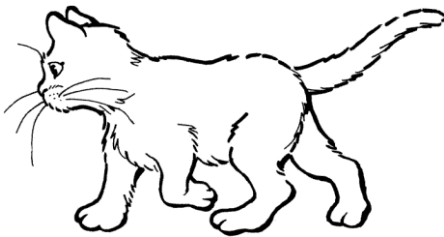
Induvinedda di u ghjornu
INDUVINEDDA N°3- niveddu GS
Quali socu?



Ascolta bè è busca u bonu animali

(Dà dui volti ogni cunsigna eppo passà à quidda chì suvita. Fà una croci à nantu à l'animali chì sò à caccia.)

T'aghju più pedi ch'è a sarpa
T'aghju menu pedi chì u centupedi
T'aghju pedi quant'è a vacca
T'aghju un corru in menu chì a capra



Induvinedda di u ghjornu
INDUVINEDDA N°3- niveddu GS
Quali socu?



Suluzioni



A licorna