

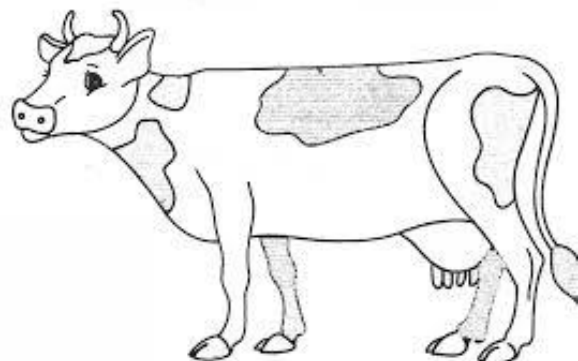
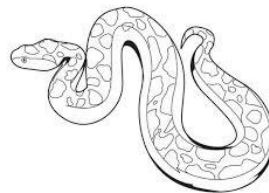
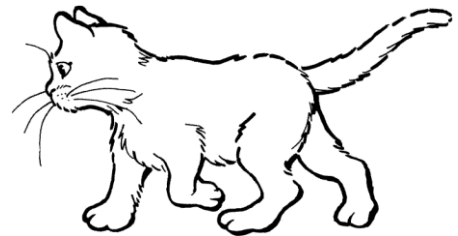
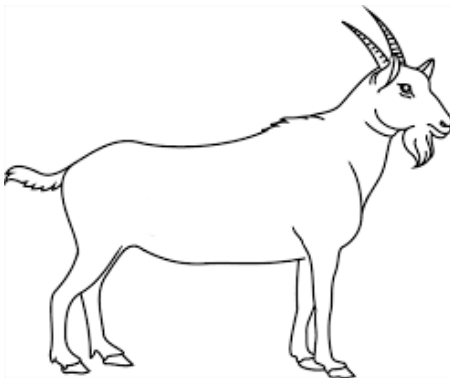
Induvinedda di u ghjornu
INDUVINEDDA N°3- niveddu MS
Quali socu?



Ascolta bè è busca u bonu animali

(Dà dui volti ogni cunsigna, eppo passà à quidda chì suvita. Fà una croci à nantu à l'animali chì sò à caccià.)

T'aghju più pedi chì a sarpa
T'aghju menu pedi chì a furmicula
T'aghju pedi quantu a vacca
Ùn aghju mancu un corru





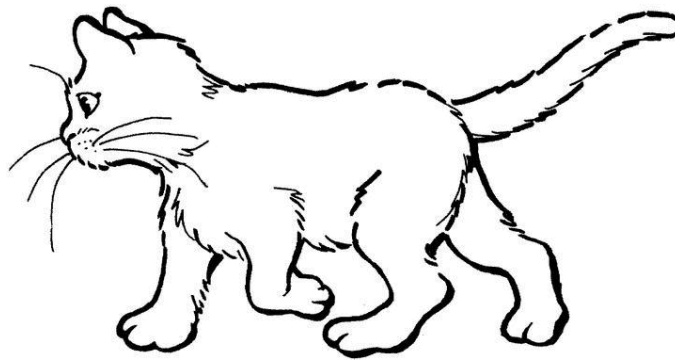
RÉGION ACADÉMIQUE
CORSE

MINISTÈRE
DE L'ÉDUCATION NATIONALE,
DE L'ENSEIGNEMENT SUPÉRIEUR
ET DE LA RECHERCHE

Induvinedda di u ghjornu
INDUVINEDDA N°3- niveddu MS
Quali socu?



Suluzioni



U ghjattu